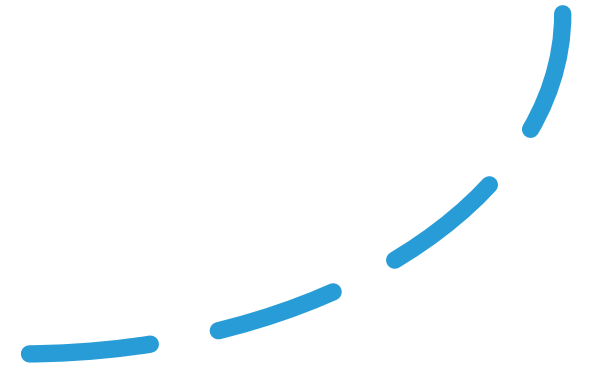




# Housing Stability

Why is this  
initiative  
important?

Living in a stable, adequate home that is affordable to the household yields a multitude of opportunities for children, youth, and adults toward employment, education, and health. By increasing affordable housing and supporting housing stability, Weld County households experience more positive outcomes.





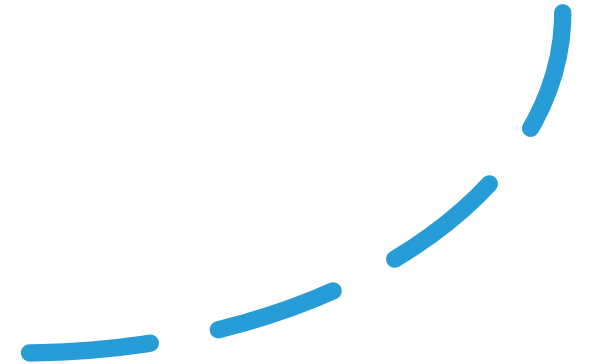
# Housing Stability

What are we doing in this initiative?

The Weld Trust will fund projects aimed to provide immediate care for the current homeless population in Weld County.

Additionally, the Weld Trust will fund programs that prevent households experiencing housing instability from becoming homeless.

Finally, The Weld Trust will support projects that increase affordable housing opportunities.





# Housing Stability

What are the priorities in this initiative?

- **Homeless Prevention**

Increase the number of individuals and families remaining in their home following assistance.

- **Emergency Shelter**

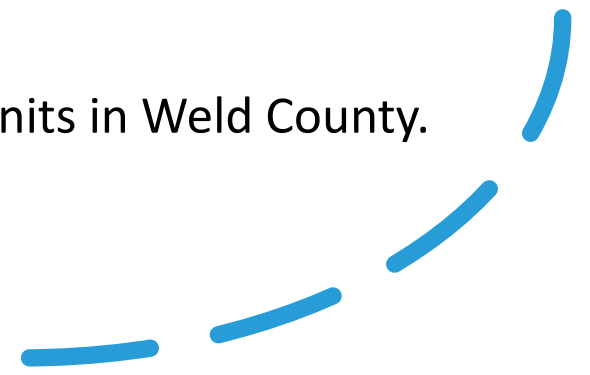
Increased the number of emergency shelter beds and units for homeless people and victims in Weld County.

- **Emergency Financial Assistance and Case Management**

Increase the number of support resources for people experiencing homelessness.

- **Affordable Housing**

Increase the number of affordable housing units in Weld County.





# Housing Stability

What are our goals for this initiative?

- Decrease by 20% the number of people experiencing homelessness as measured by functional zero.
- Increase by 5% the number of people experiencing homelessness making progress in an individualized care plan.
- Increase by 20% the number of households who remain in their home after 12 months of assistance.
- Decrease by 2% the number of people paying more than 35% of their income on rent.
- Increase by 5% the number of affordable housing units at 30% - 120% average median income.

